



WAN With Internet Access

Larger organizations with more users trying to access the Internet often require a dedicated connection with more bandwidth to their internet service provider (ISP). ISPs typically offer some combination of dial-up and dedicated access, so they can adequately support different customer's needs. The solution featured here offers a means for providing dedicated Internet access to medium-sized business LANs.

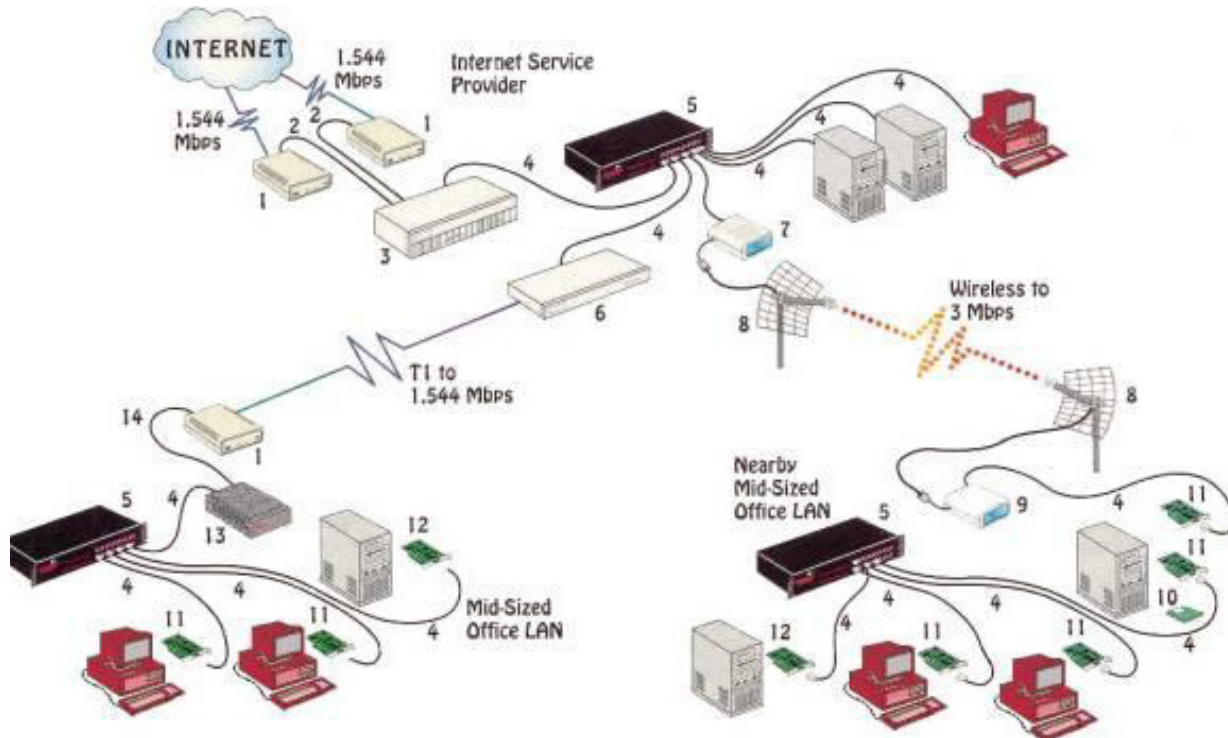
Most organizations will accomplish this through a digital leased line, as illustrated on the left. A T1 line provides a full 1.544 Mbps of bandwidth for fast downloads of graphics and images across the link. Since Cisco owns approximately 50% of the WAN router market, most ISPs will use Cisco router. Customers connecting to ISPs can also use a Cisco router, or, as shown here, can use other manufacturer's routers that support Point-to-Point Protocol (PPP) for interoperability.

The wireless Internet access method illustrated on the right side of this solution is somewhat more unusual than a leased-line connection but can result in significant cost savings for customers located near their ISP's office. A wireless Ethernet bridge at the customer's site connects via spread-spectrum radio to a wireless access point on the ISP's network, providing 3 Mbps of bandwidth more than T1 and eliminating the need to pay monthly line costs. A software based firewall system protects the customer's internal network from unauthorized intrusion via the internet.

- » **Provides user to-ISP leased line connections to full T1**
- » **Customers located within 5 miles line-of-sight can connect over Wireless links at speeds up to 3 Mbps and eliminate monthly leased line costs**
- » **Cisco 4500 series router at ISP office supports up to 4 full T1 connections to the Internet**



WAN With Internet Access



Products:

1. T1 CSU/DSU
2. V.35 Cable Assembly for Cisco Router
3. Cisco 4500 Router, LAN/WAN Modules and Feature Pack
4. 7 ft. T568B UTP Patch Cable, Red
5. 10 Base T Hub
6. Cisco 2524 Router with Integrated T1 CSU/DSU and Feature Pack
7. Wireless Ethernet Access Point
8. 24 dB Antenna with Cable and hardware
9. Wireless Ethernet Bridge
10. Firewall Software
11. 10 Base T Adapter Card, ISA
12. 10 Base T Adapter Card, PCI
13. IP/IPX Router with PPP
14. DB-25M to 34-pin M V.35 Cable Assembly