



## **Token Ring Using UTP**

---

**This Token Ring solution uses low-cost unshielded twisted pair cable** wired in a star configuration for easy moves, changes, and additions, while still allowing Token Ring devices to operate at the fast 16 Mbps data rate. You can make changes quickly and easily by simply moving a modular patch cord on the patch panel.

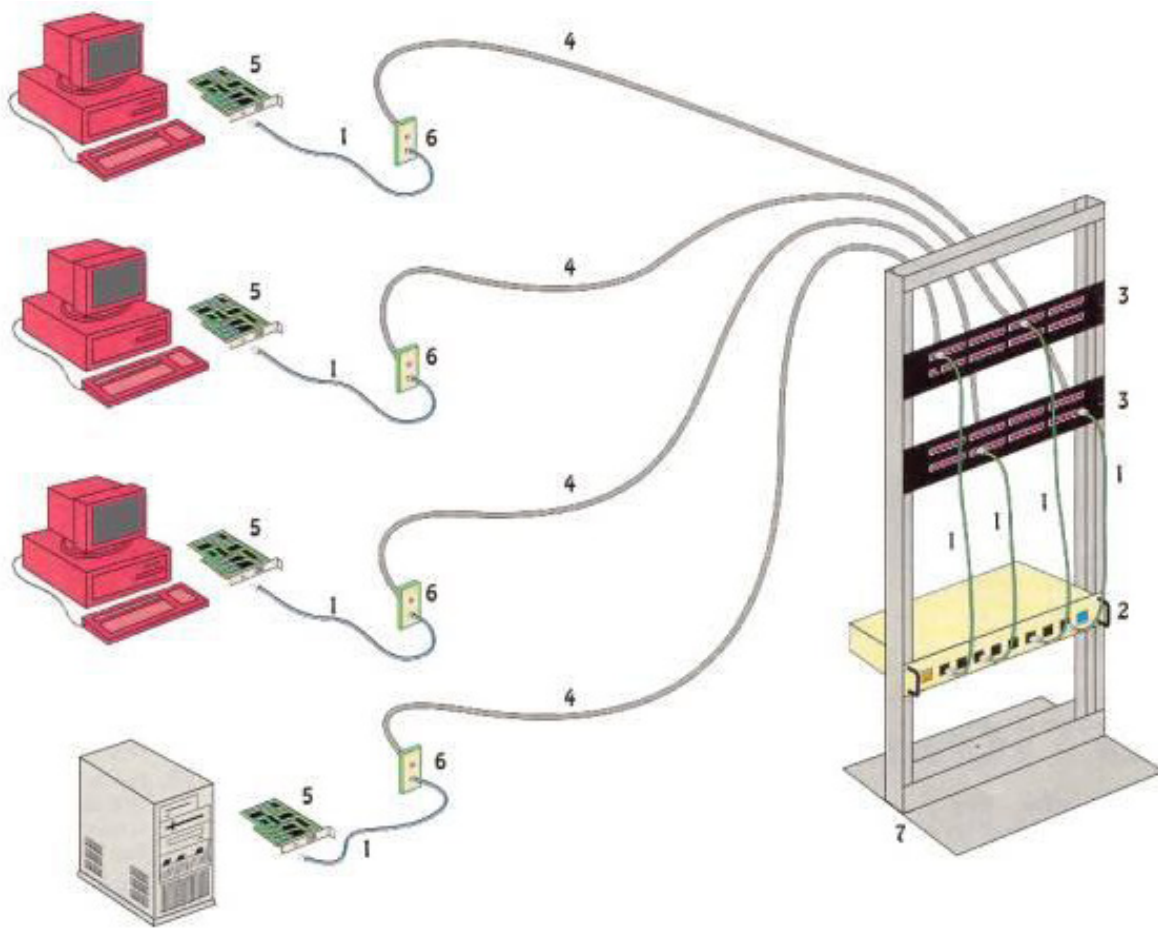
**Network cable management is further simplified** by the use of a powered multi-station access unit (MSAU). At 16 Mbps, this MSAU allows cable distances of up to 100 Meters to each network lobe. In addition, the length of cable attached to the lobe ports of the MSAU are not counted as part of the overall ring length. Data integrity is maintained by using high quality 110 patch panels as well as wallplates and Cat. 5 cable that have been certified at speeds up to 100 Mbps.

**This cabling scheme follows the EIA/TIA T568B wiring standard**, making it fully compatible with all 10 Base T applications. It is also compatible with other networking schemes such as RS-232, RS-422 and 4 Mbps Token Ring. By simply changing the attachment cables and devices at the equipment rack and the workstation, you can adapt the existing cabling to a variety of systems and interfaces.

- » **Runs Token Ring at 4 or 16 Mbps using UTP cable**
- » **Ensures easy moves, changes, and additions**
- » **Makes network cable management simple**
- » **Provides reliable high speed performance by using Category 5 cable and connecting hardware**
- » **Compatible with other networking schemes**



# Token Ring Using UTP



## Products:

1. 568B Cat. 5 UTP Cable Assembly
2. Powered MSAU
3. Cat. 5 Patch Panel
4. Cat. 5 Cable-PVC and Plenum
5. 4/16 Mbps Token Ring Adapter card
6. Cat. 5 Outlets
7. 66" Distribution Rack