



Standard Token Ring

In the early to mid 1980s, IBM introduced what is know known as the IBM Cabling System. This cabling system was designed to be adaptable to most types of IBM connectivity requirements, such as the System/3X and AS/400, 3270/3X74 and Token Ring. This solution shows how the IBM Cabling System is used in a Token Ring environment.

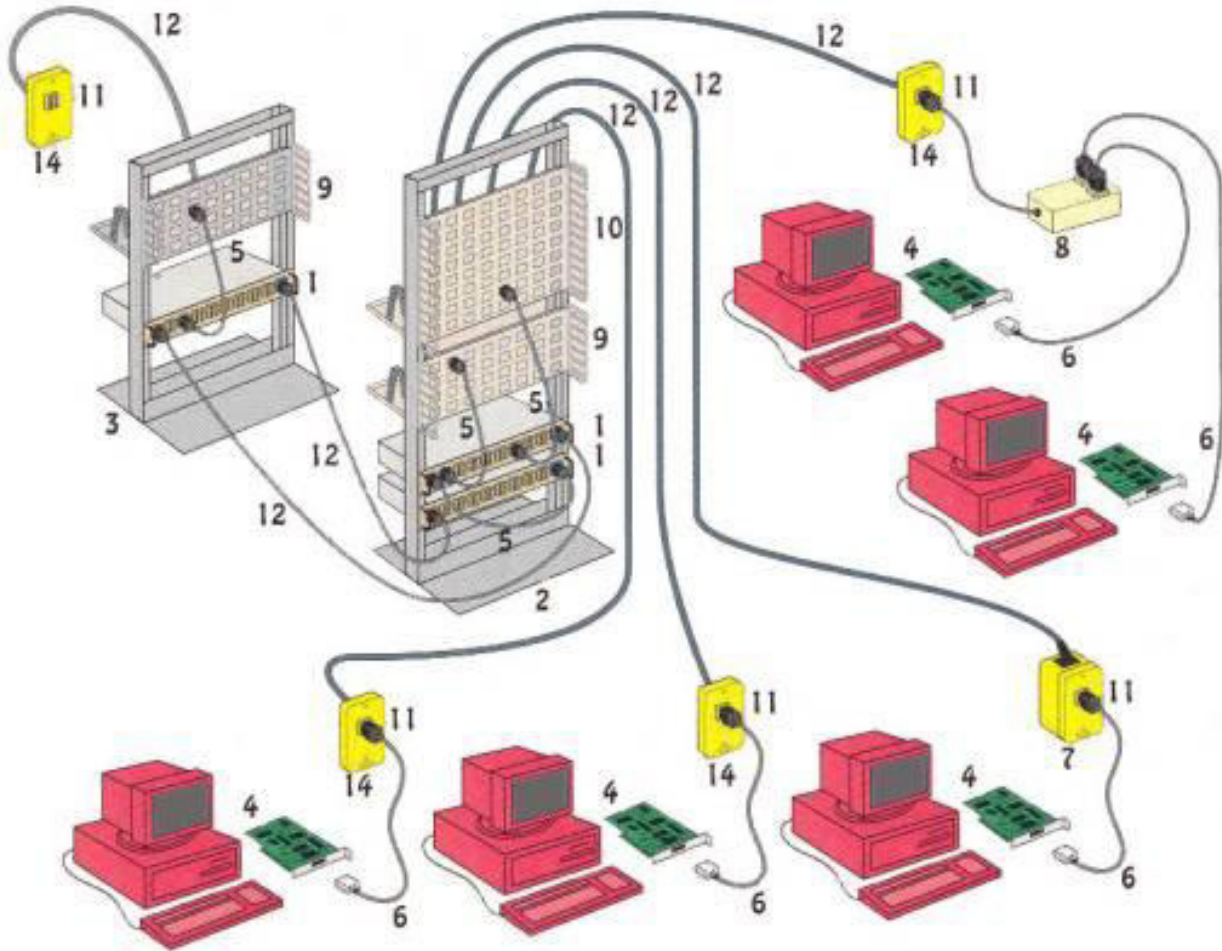
The components used in this solution meet or exceed IBM specification for 4 and 16 Mbps Token Ring, so your system speed is never limited by cabling. The star wired topology makes moves, changes, and additions simple and easy. Changes can be made simply by moving a patch cable on the distribution panel.

Unlike unshielded twisted pair cable, the cable used in this solution is shielded to prevent interference from electrical noise. This cabling system is also fully compatible with other networking schemes, such as RS-232 and RS-422.

- » **Designed and supported by IBM**
- » **Supports 4 and 16 Mbps Token Ring**
- » **Make moves, changes, and additions easy**
- » **Provides immunity to electrical noise**
- » **Compatible with other networking schemes**



Standard Token Ring



Products:

1. MSAU
2. 66" Rack
3. 47" Rack
4. 4/16 Adapter Cards
5. Patch Cable ~ 8 Feet
6. Adapter Cable ~ 8 Feet
7. Surface Mount Box
8. Lobe Doubler
9. Half Distribution Panel
10. Full Distribution Panel
11. Data Connector
12. Type 1 Cable
13. Relay Set-Up Tool Cable Tester Kit
14. Type 1 Faceplate