



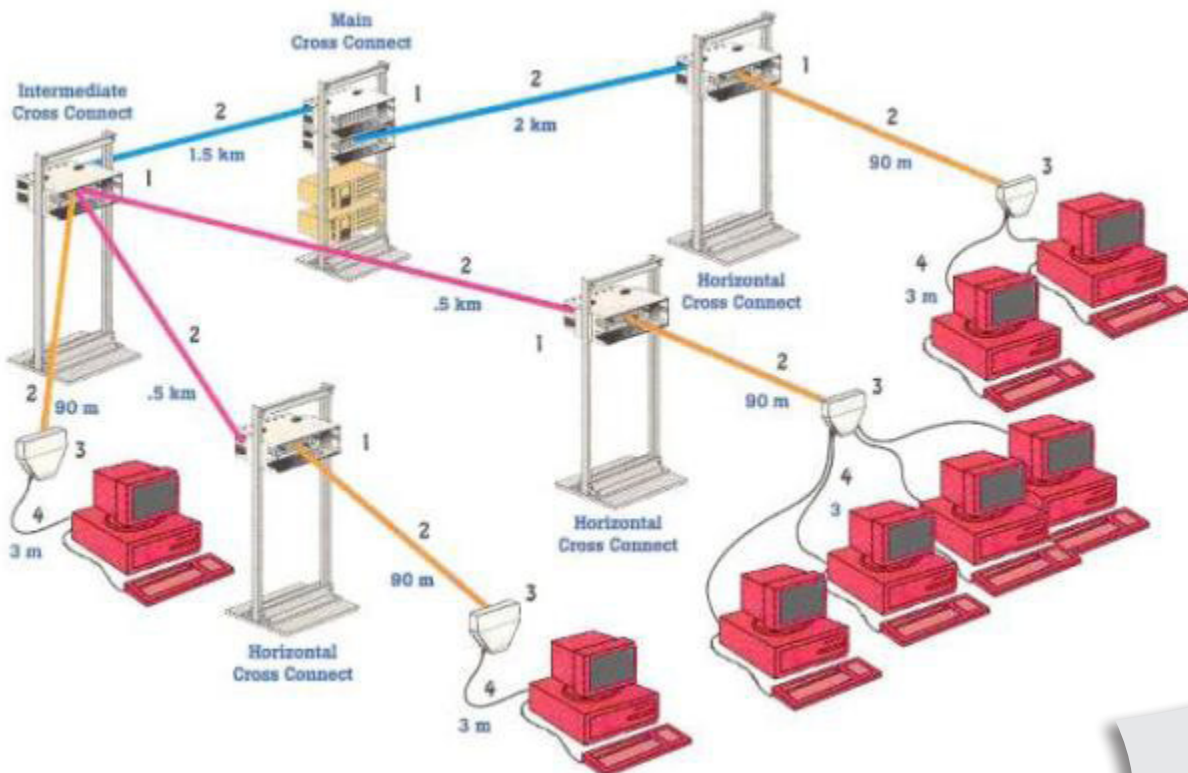
Fiber To The Desktop

There are many options in types of fiber optic cable that may be used and how many strands to have. In general, each workstation connection requires a minimum of 2 strands of fiber. Therefore, the backbone and horizontal cables feeding from the main cross-connect out to the workgroup outlets that must contain at least 2 strands of fiber for every node connected to them. Remember, for backbone cabling, it is always advisable to install cable with more fibers than you actually need at the current time. This leave room for future expansion and is much more economical than having to pull all new fiber in the future. Maximum lengths for backbone, horizontal and patch cables, according to the ANSI/TIA/EIA-568-A standard, are indicated on the drawing.

- » Complies with ANSI/TIA/EIA-568-A Guidelines for Fiber Optic cabling
- » Uses high quality multimode fiber meeting FDDI specs
- » Multimedia Workgroup outlet maintains minimum bend radius and provides slack storage and ST or SC adapter interfaces

Products:

1. Fiber Distribution Enclosures
2. Bulk 62.5/125 Micron Fiber Optic Cable
3. Multimedia Workgroup Outlet With Fiber Adapter Couplers
4. Fiber Optic Cable Assembly
5. Steel or Aluminum Distribution rack



PREFERRED DATA SYSTEMS, LLC.